

# Broadband High Power Amplifier

Product Name : RCA2127H50B

Doc. Name : General Spec.

---

<p style="text-align: center;"><b>General Specification</b> for <b>RCA2127H50B</b></p>
--

1

---

<p style="text-align: center;"><b>RESTRICTION ON USE, DUPLICATION, OR DISCLOSURE OF PROPRIETARY INFORMATION</b></p>
---

This document contains proprietary information, which is the sole property of RFcore co., LTD.

The document is submitted to the recipient for his use only.

By receiving this document the recipient undertakes not to duplicate the documents or to disclose in part of, or the whole of, any of the information contained herein to any third party without receiving beforehand, written permission from the submitting company.

Created	Printed	Document Number	Revision	Manufacturer
2013/1/29	2013/1/30		A	<b>RFcore co.,Ltd</b>
File : RCA2127H50B General Spec.docx				

*The Specifications is subject to change before finalization*

Customer Service: Tel. 82-31-708-7575

Email: [sales@rfcore.com](mailto:sales@rfcore.com)

<http://www.rfcore.com>

# Broadband High Power Amplifier

Product Name : RCA2127H50B

Doc. Name : General Spec.

ELECTRICAL SPECIFICATIONS		
Parameter	Specification	Remark
Frequency Range	2100 ~ 2700 MHz	
Saturated Output Power	50dBm min.	@ CW
Small Signal Gain	50 dB min.	Input Power = -15dBm
Gain Flatness	Peak to Peak 5.0 dB	@ Po=50dBm
Maximum Input Power for no damage	10 dBm max.	
Input VSWR	Less than 2 : 1	
DC Input Voltage	28 ± 1.0 Vdc	
Current Consumption	16 A max. 13 A typ.	@ Pout = 50 dBm
I/O Interface (D-Sub 9Pin Male)	1. GND	
	2,3. Do Not Connect	
	4. Temperature Monitor	$VT = 3.6 - 0.022 \times (Tc - 30)$ , Tc is Case Temperature in degC ± 5°C
	5. Temperature Alarm	Alarm & Shutdown : TTL High @case temp. 85±5°C Auto Restart : TTL Low @case temp. 65±5°C
	6. Enable (Active Low)	Pulled-up @ 5V with 10kohm
	7. Do Not Connect	
	8. Forward Power Monitor	4.0±0.3V@50dBm, slope : 0.1V/dB $V_{pin8} = 4.0 - (50 - Pout) \times 0.1 \pm 0.3V$
	9. Reverse Power Detector	Logarithmic Detector (0.05V/dB)

2

ENVIRONMENTAL SPECIFICATIONS		
Parameter	Specification	Remark
Operating Case Temperature	-20 ~ +70 °C	
Storage Temperature	-40 ~ +85 °C	

Created	Printed	Document Number	Revision	Manufacturer
2013/1/29	2013/1/30		A	<b>RFcore co.,Ltd</b>
File : RCA2127H50B General Spec.docx				

The Specifications is subject to change before finalization

Customer Service: Tel. 82-31-708-7575

Email: sales@rfcore.com

http://www.rfcore.com

# Broadband High Power Amplifier

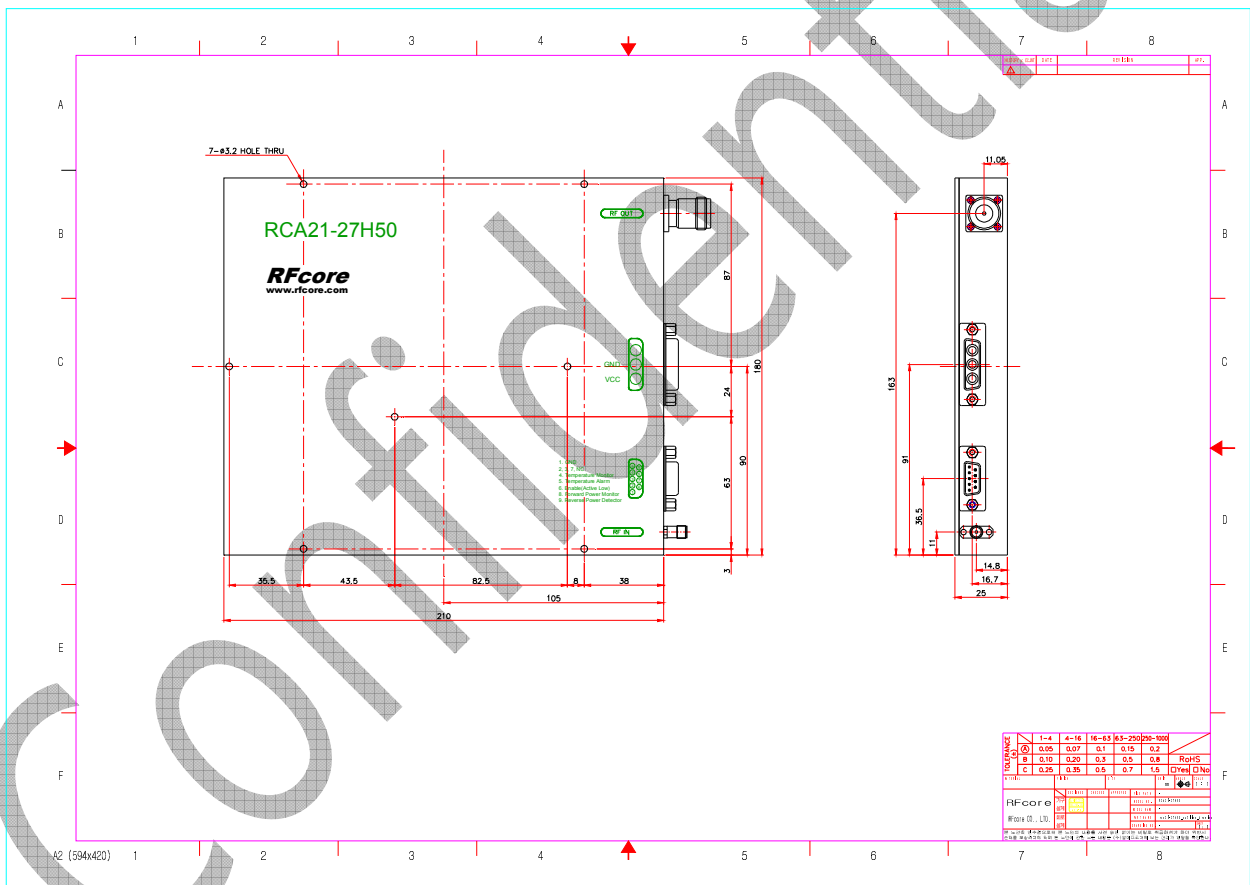
Product Name : RCA2127H50B

Doc. Name : General Spec.

## MECHANICAL SPECIFICATIONS

Parameter	Specification	Remark
Dimension	210 x 180 x 25 mm	
RF Input Connector	SMA Female	
Output Connector	N-type Female	
DC Power Connector	3W3 (A1:VCC, A2:GND, A3:N.C)	
Control Connector	D-Sub 9 Pin Male	
Cooling	Adequate Heat-sink required	

## MECHANICAL DRAWING



Created	Printed	Document Number	Revision	Manufacturer
2013/1/29	2013/1/30		A	<b>RFcore co.,Ltd</b>

File : RCA2127H50B General Spec.docx

The Specifications is subject to change before finalization

Customer Service: Tel. 82-31-708-7575

Email: sales@rfcore.com

http://www.rfcore.com